

OFFICE OF EMERGENCY SERVICES

2800 MEADOWVIEW ROAD
SACRAMENTO, CALIFORNIA 95832
(916) 427-4990

FYI
**FOR YOUR
INFORMATION ONLY**



July 16, 1986

TO: CHAIRMAN AND MEMBERS
OES FIRE AND RESCUE SERVICE ADVISORY COMMITTEE

CHAIRMAN AND MEMBERS
FIRESCOPE BOARD OF DIRECTORS

SUBJECT: RESOLUTION
INTEGRATION OF OES FIRE AND RESCUE ADVISORY
COMMITTEE AND FIRESCOPE BOARD OF DIRECTORS

Per action and recommendation of the FIRESCOPE Board of Directors on June 4, 1986 and the OES Fire and Rescue Service Advisory Committee on June 10, 1986, you will find attached a draft Resolution and Organization Chart for your perusal and comments. A draft Charter for the combined Committee is currently being prepared and will be sent to you when completed.

In as much as formal acceptance and signature of the documents is projected for the joint meeting on September 10 in Sacramento, I would very much appreciate your early consideration and comments on these documents in order that they may be finalized.

Sincerely,

A handwritten signature in cursive script, appearing to read 'R.G. Barrows'.

R.G. BARROWS, Chief
Fire and Rescue Division

attachment

Rec'd 7/18/86

STUDY FOR
INFORMATION ONLY

11/11/77

R E S O L U T I O N
OES FIRE AND RESCUE SERVICE ADVISORY COMMITTEE/
FIREScope BOARD OF DIRECTORS

DRAFT

WHEREAS, an Incident Management and Resource Coordination System with supporting technologies known as FIREScope has been developed and implemented in the southern portion of the state of California; and

WHEREAS, said FIREScope Program has in place a decision process consisting of a Board of Directors, Operations Team, Task Force and Specialist Groups; and

WHEREAS, each of the FIREScope member agencies consisting of California Department of Forestry, Los Angeles City Fire Department, Los Angeles County Fire Department, Office of Emergency Services, Orange County Fire Department, Santa Barbara County Fire Department, U.S. Forest Service, and Ventura County Fire Department have representation at each level of the decision process; and

WHEREAS, the OES Fire and Rescue Service Advisory Committee has recognized the need for further implementation of said systems and technologies throughout the state of California; and

WHEREAS, the OES Fire and Rescue Service Advisory Committee established a working group known as CALFIRMS to study and make recommendations regarding the feasibility of said systems and technologies extension in Northern California; and

WHEREAS, the FIREScope member agencies and the OES Fire and Rescue Service Advisory Committee recognize that extension of FIREScope products to the remainder of the state are feasible and necessary; and

WHEREAS, the FIREScope member agencies and the OES Fire and Rescue Service Advisory Committee further recognize the necessity of having a single body coordinate the extension of said programs and future development for a total statewide effort; and

WHEREAS, both the FIREScope member agencies and the OES Fire and Rescue Service Advisory Committee agree and confirm that the OES Fire and Rescue Service Advisory Committee is the logical body to perform said function; and

WHEREAS, both bodies recognize the necessity to keep the FIREScope decision process in place; and

WHEREAS, a majority of the FIREScope Board of Directors are currently members of the OES Fire and Rescue Service Advisory Committee; and

WHEREAS, the OES Fire and Rescue Service Advisory Committee agrees to expand its membership to include all members of the FIREScope Board of Directors; and

WHEREAS, both the FIREScope Board of Directors and the OES Fire and Rescue Service Advisory Committee voted unanimously in favor of integrating both bodies; now,

THEREFORE, BE IT RESOLVED,

Effective July _____, 1986 all of the FIREScope member agency Board of Directors shall become voting members of the OES Fire and Rescue Service Advisory Committee and shall remain members of said Advisory Committee for the duration of the FIREScope Program; and be it further

RESOLVED, the OES Fire and Rescue Service Advisory Committee shall act as the Board of Directors for the decision process to ensure extension of FIREScope Programs and future development for a statewide coordinated effort.

OES FIRE AND RESCUE SERVICE ADVISORY COMMITTEE

WILLIAM R. POWELL, Chairman

Date _____

FIRESCOPE MEMBER AGENCIES

WILLIAM M. MEDIGOVICH, Director
Office of Emergency Services
Chairman, FIRESCOPE Board of
Directors

LARRY J. HOLMS, Director
Orange County Fire Department

JERRY PARTAIN, Director
California Department of Forestry

RICHARD PETERSON, Chief
Santa Barbara County Fire Department

JOHN W. ENGLUND, Chief Engineer
Los Angeles County Fire Department

RICHARD MONTAGUE, Aviation & Fire Mgmt.
U.S. Forest Service

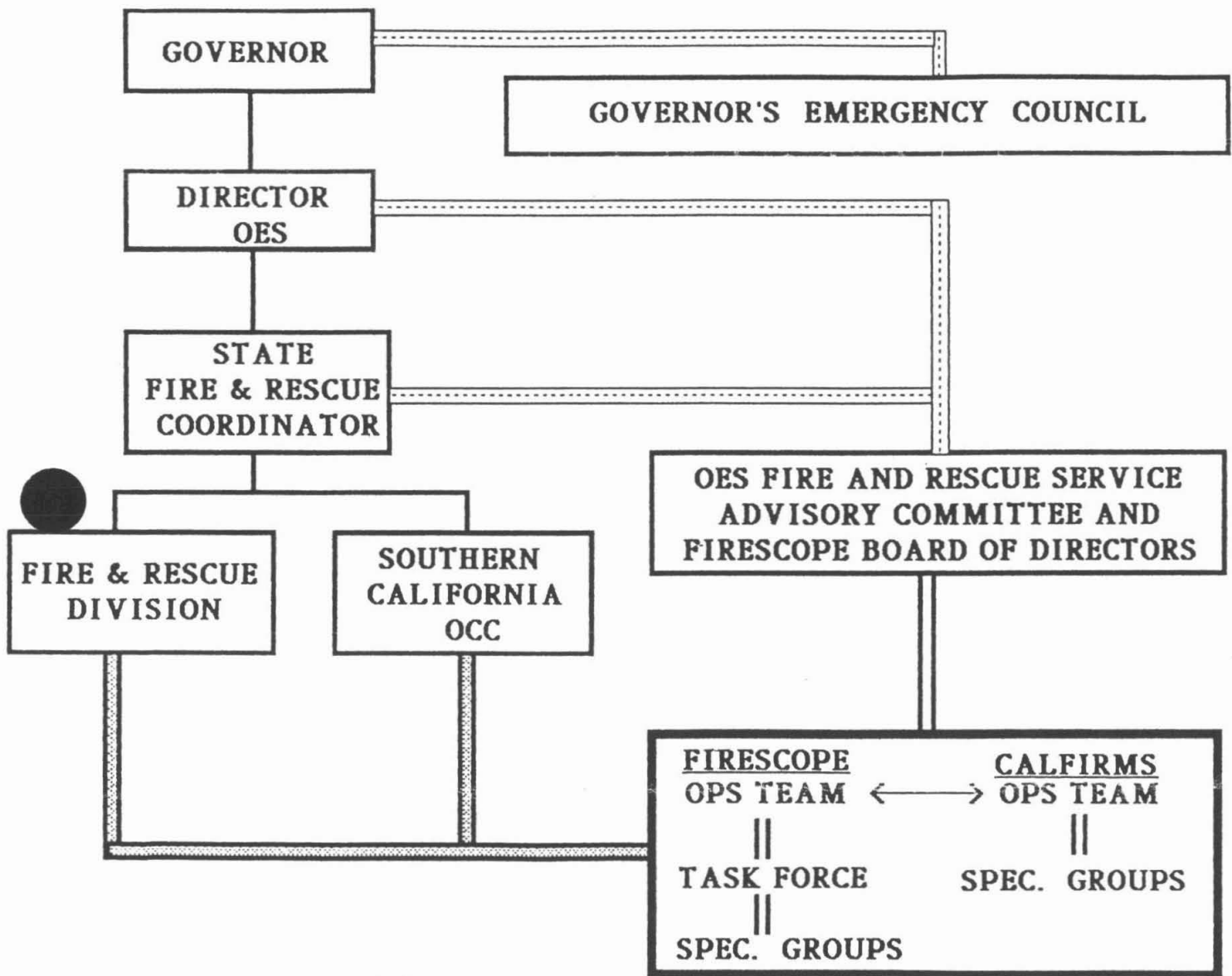
DONALD L. MANNING, Chief Engineer
Los Angeles City Fire Department






WESLEY B. KILCREASE, Chief
Ventura County Fire Department

Date: _____

OES FIRE AND RESCUE SERVICE ADVISORY COMMITTEE/
FIRESCOPE DECISION PROCESS

ORGANIZATION CHART



-  Advisory
-  Program Decision Process
-  Liaison
-  Coordination
-  Direction and Control