



# INCIDENT COMMAND SYSTEM

Hazardous Materials

LESSON ICS-361-7  
Hazardous Materials  
Safe Refuge Area  
Manager

---

<b>TOPIC:</b>	HAZARDOUS MATERIALS SAFE REFUGE AREA MANAGER
<b>TIME FRAME:</b>	15 Minutes
<b>LEVEL OF INSTRUCTION:</b>	Level I
<b>BEHAVIORAL OBJECTIVE:</b>	
• Condition:	Given a written examination
• Behavior:	The student will recognize the roles and responsibilities of the Hazardous Materials Safe Refuge Area Manager
• Standard:	With a minimum 80% accuracy according to the information in the Incident Command System Hazardous Materials Module
<b>MATERIALS NEEDED:</b>	Hazardous Materials Group Organization Chart, Control Zone Layout Chart, Lesson Plan ICS-361-7, Dry erase board and pens, Written quiz
<b>REFERENCES:</b>	Field Operations Guide (FOG) ICS-1107 Position Description, ICS-361-7 Lesson Plan
<b>PREPARATION:</b>	<p>The Hazardous Materials Safe Refuge Area Manager is responsible for having a thorough working knowledge of the duties and responsibilities of the position as listed in the Hazardous Materials Safe Refuge Area Manager Position Manual (ICS-1107). The Safe Refuge Area Manager is one of the functional management positions of the Hazardous Materials Module. As the Safe Refuge Area Manager you will report directly to the Site Access Control Leader. As Safe Refuge Area Manager you will supervise all personnel assigned to the Safe Refuge Area.</p> <p>You will be given a written quiz at the end of this session. The performance standard is 80%</p>



# INCIDENT COMMAND SYSTEM

Hazardous Materials

LESSON ICS-361-7  
Hazardous Materials  
Safe Refuge Area  
Manager

PRESENTATION	APPLICATION
<p>I. ORGANIZATION</p> <p>A. Safe Refuge Area Manager assigned to</p> <ol style="list-style-type: none"> <li>1. Site Access Control Team</li> </ol> <p>B. Reports to</p> <ol style="list-style-type: none"> <li>1. Site Access Control Leader</li> </ol> <p>C. Coordinates with</p> <ol style="list-style-type: none"> <li>1. Decontamination Leader</li> <li>2. Entry Leader</li> </ol> <p>D. Operates near the Safe Refuge Area</p> <ol style="list-style-type: none"> <li>1. Safe Refuge Area is located               <ol style="list-style-type: none"> <li>a) In the Contamination Reduction Zone (CRZ) near the Contamination Reduction Corridor (CRC)</li> </ol> </li> <li>2. Comply with PPE requirements               <ol style="list-style-type: none"> <li>a) If entry into CRZ</li> </ol> </li> </ol> <p>E. Site Access Control component</p> <p>II. PERSONNEL</p> <p>A. General objectives of this position</p> <ol style="list-style-type: none"> <li>1. Prevent spread of contamination               <ol style="list-style-type: none"> <li>a) From victims</li> </ol> </li> <li>2. Prioritize victims for treatment</li> <li>3. Collect information from victims</li> </ol> <p>B. Safe Refuge Area Manager requirements</p> <ol style="list-style-type: none"> <li>1. Minimum equivalent to               <ol style="list-style-type: none"> <li>a) Federal, state, and local laws</li> </ol> </li> </ol> <p>III. MAJOR RESPONSIBILITIES AND PROCEDURES</p> <p>A. Review common responsibilities, FOG (Page 1-2)</p> <p>B. Check-in and obtain briefing from the Site Access Control Leader</p>	<p>In the ICS organization the Safe Refuge Area Manager assigned to?</p> <p>Where does the Safe Refuge Area Manager operate?</p> <p>Describe the requirements of the Safe Refuge Area Manager position.</p> <p>What are the check-in procedures for the Safe Refuge Area Manager?</p>



# INCIDENT COMMAND SYSTEM

Hazardous Materials

LESSON ICS-361-7  
Hazardous Materials  
Safe Refuge Area  
Manager

<ol style="list-style-type: none"><li>1. Complete Check-in list (ICS Form 211)</li><li>2. If reporting directly to assignment, check in via radio</li><li>3. Request briefing which includes<ol style="list-style-type: none"><li>a) Incident Briefing (ICS Form 201)</li><li>b) Or the information verbally</li><li>c) Request instructions concerning work activities</li></ol></li><li>4. Obtain Incident Action Plan</li><li>5. Start Unit/Activity Log (ICS Form 214)</li></ol> <p>C. Establish the Safe Refuge Area</p> <ol style="list-style-type: none"><li>1. In the Contamination Reduction Zone<ol style="list-style-type: none"><li>a) Adjacent to the CRZ corridor and</li><li>b) Exclusion Control Line</li></ol></li><li>2. Coordinate CRZ with the Decontamination Leader</li><li>3. Coordinate the layout of the Safe Refuge Area with the Entry Leader to<ol style="list-style-type: none"><li>a) Ensure expedient movement of non-contaminated victims from the Refuge Area to the Safe Refuge Area</li><li>b) Persons in the SRA that are not contaminated should be moved to the Support Zone</li></ol></li><li>b) Comply with the hazard site traffic plan</li><li>4. Determine resource needs<ol style="list-style-type: none"><li>a) Request through Site Access Control Leader<ol style="list-style-type: none"><li>(1) Equipment and materials</li><li>(2) Personnel</li></ol></li></ol></li><li>5. Post Safe Refuge Area for identification</li></ol>	
--	--



# INCIDENT COMMAND SYSTEM

Hazardous Materials

LESSON ICS-361-7  
 Hazardous Materials  
 Safe Refuge Area  
 Manager

<p>D. Monitor hazardous material release</p> <p>1. Ensure the Safe Refuge Area is not subject to exposure</p> <p>a) Communicate with Assistant Safety Officer and Hazardous Materials through the Site Access Control Leader</p> <p>b) Communicate with Site Access Control Leader</p> <p>E. Assist Site Access Control Leader</p> <p>1. Ensure victims are evaluated victims for primary decontamination</p> <p>F. Manage the Safe Refuge Area for holding and evaluation of victims who may have information about the incident</p> <p>1. Evaluate victims for potential secondary contamination to the Emergency Medical System</p> <p>a) EMS equipment, vehicles, personnel, hospitals</p> <p>2. Coordinate with Decontamination Leader</p> <p>a) Persons that may need to be re-triaged to the decontamination corridor</p> <p>b) Prioritize persons for decontamination</p> <p>3. Collect civilian witness information regarding the Haz Mat incident</p> <p>a) Relay this information to the HM Group Supervisor, through Site Access Control Leader</p> <p>G. Communicate with Entry Leader</p> <p>1. Coordinate movement of victims from</p> <p>a) Exclusion Zone to the Safe Refuge Area</p> <p>b) Request EMS triage</p> <p>(1) Medical condition</p>	<p>How can you control the movement of injured persons?</p> <p>What will you do with the information that is given to you from the victims?</p> <p>How could you avoid the possible overloading of the CRC?</p>
--	---



# INCIDENT COMMAND SYSTEM

Hazardous Materials

LESSON ICS-361-7  
Hazardous Materials  
Safe Refuge Area  
Manager

---

<ul style="list-style-type: none"><li>H. Communicate with the Decontamination Leader<ul style="list-style-type: none"><li>1. Coordinate movement of victims from the Safe Refuge Area to the CRC</li><li>. Maintain Unit Activity Log / ICS Form 214</li></ul></li><li>I. Complete an ICS 214<ul style="list-style-type: none"><li>1. Record major events and actions</li><li>2. Submit to Site Access Control Leader<ul style="list-style-type: none"><li>a) Through the Site Access Control Manager</li><li>b) At the end of each operational period</li></ul></li></ul></li></ul>	
--	--

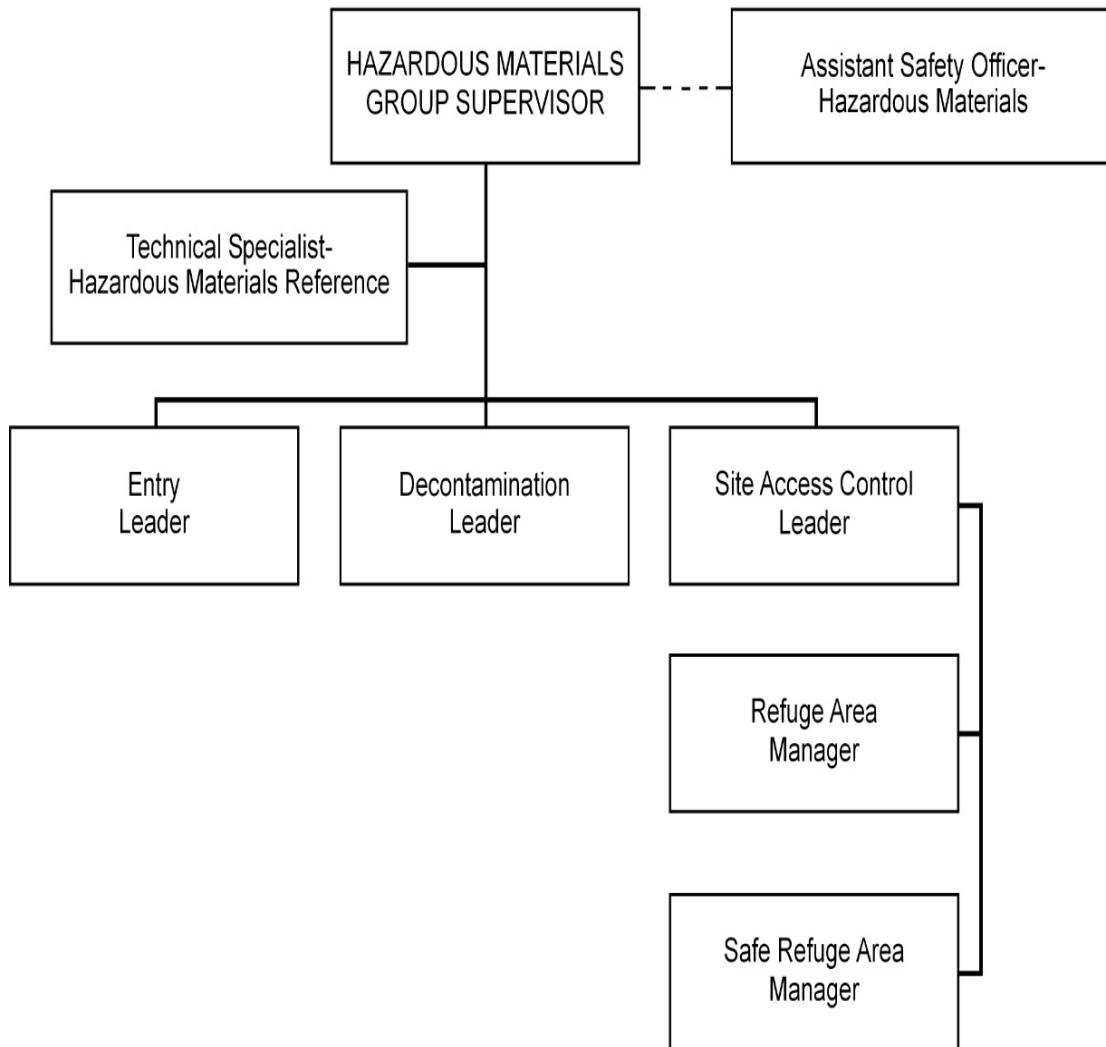


# INCIDENT COMMAND SYSTEM

Hazardous Materials

LESSON ICS-361-7  
Hazardous Materials  
Safe Refuge Area  
Manager

## Hazardous Materials Group Organization



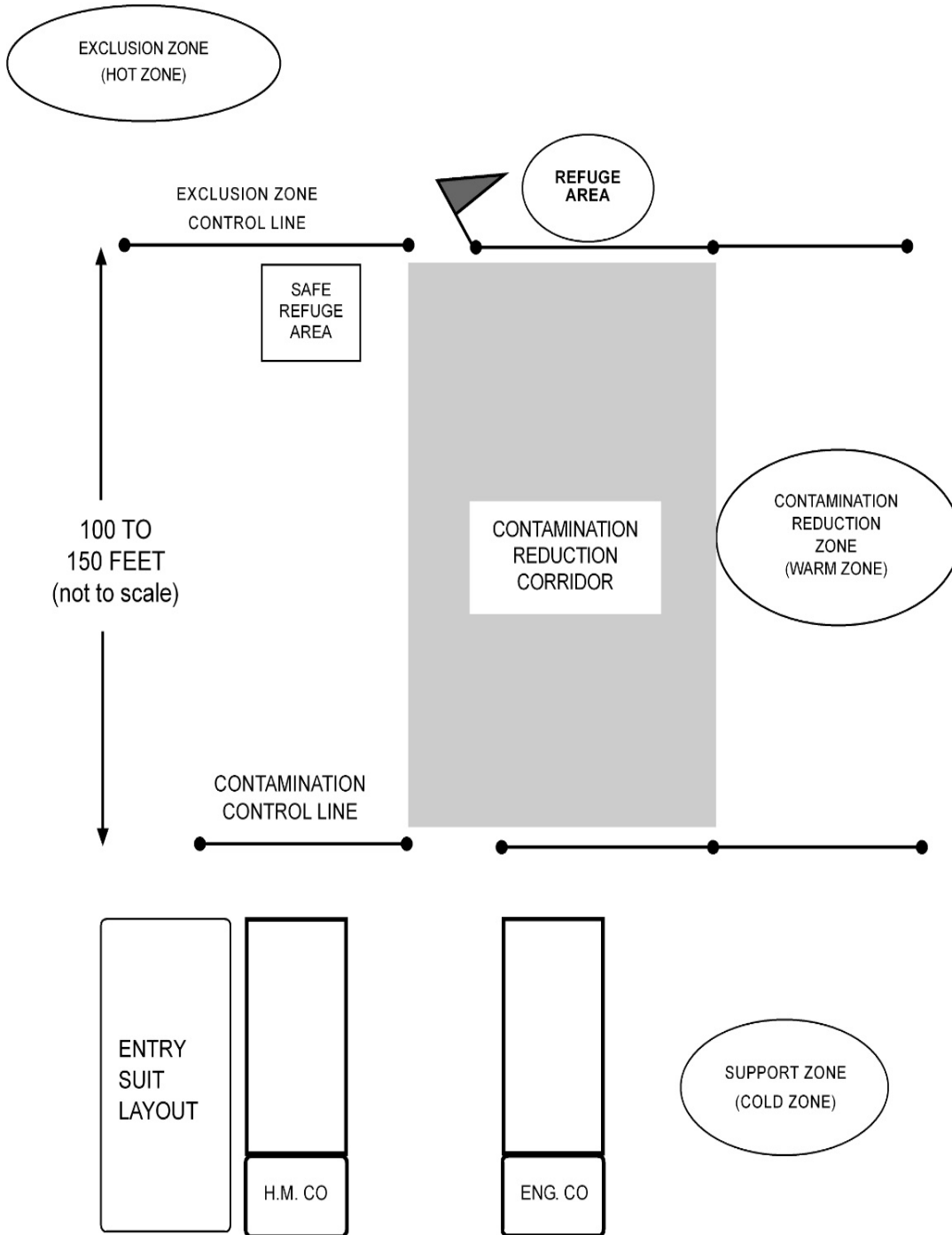


# INCIDENT COMMAND SYSTEM

Hazardous Materials

LESSON ICS-361-7  
Hazardous Materials  
Safe Refuge Area  
Manager

## CONTROL ZONE LAYOUT





# INCIDENT COMMAND SYSTEM

Hazardous Materials

LESSON ICS-361-7  
Hazardous Materials  
Safe Refuge Area  
Manager

---

## **SUMMARY:**

The position description and checklist just covered is the minimum consideration for the position of Hazardous Materials Safe Refuge Area Manager. The most important one is to establish communications and coordination with the various leader positions that you will be interfacing. The evaluation of victims (triaging) and the gathering of information from the victims is very important to this position.

## **EVALUATION:**

Give student quiz ICS-361-7

## **ASSIGNMENT:**

Read pages 1-6 of Hazardous Materials Safe Refuge Area Manager Position Manual (ICS-1107)





# INCIDENT COMMAND SYSTEM

Hazardous Materials

LESSON ICS-361-7  
Hazardous Materials  
Safe Refuge Area  
Manager

---

## Incident Command System Hazardous Materials Module ICS-361-7-Quiz

Name: \_\_\_\_\_

Date: \_\_\_\_\_

### Hazardous Materials Refuge Area Manager

Instructions: This is a multiple choice quiz. For each of the following questions or statements, mark the letter preceding the one best answer.

Example: Methods and operating procedures which reduce fire, water and smoke damage during and after fire are called:

- A. Overhaul
- B. Ventilation
- C. Extinguishment
- D. Salvage

1. The Safe Refuge Area Manager reports to the:
  - A. The Site Access Control Leader
  - B. Operations Section Chief
  - C. Planning Section Chief
  - D. Hazardous Materials Group Supervisor
2. The Safe Refuge Area Manager is assigned to the:
  - A. Site Access Control Leader
  - B. The Decon Leader
  - C. Hazardous Material Group Supervisor
  - D. The Incident Commander
3. Where is the Safe Refuge Area located:
  - A. Exclusion Zone
  - B. The Support Zone
  - C. Contamination Reduction Zone
  - D. The Tepid Zone
4. The general objectives of the Safe Refuge Area Manager position includes all the following except:
  - A. Documenting the decon teams "on air time"
  - B. Preventing spread of contamination from victims
  - C. Prioritizing victims for treatment
  - D. Collecting information from victims
5. The Safe Refuge Area Manager must coordinate activities with:
  - A. The Decon Leader
  - B. The Entry Leader



# INCIDENT COMMAND SYSTEM

Hazardous Materials

LESSON ICS-361-7  
Hazardous Materials  
Safe Refuge Area  
Manager

---

- C. The Site Access Control Leader
  - D. All of the above
6. The Safe Refuge Area Manager will request additional resources through:
- A. The Site Access Control Leader
  - B. The State Warning Control Center
  - C. The Logistics Section Chief
  - D. The Planning Section Chief
7. The Safe Refuge Area Manager should relay pertinent information received from victims through the Site Access Control Leader to the:
- A. Incident Commander
  - B. Planning Section Chief
  - C. Local Media for immediate broadcast
  - D. HM Group Supervisor
8. By what criteria will the Safe Refuge Area Manager(s) triage victims:
- A. Age and gender
  - B. Training and education
  - C. Medical condition and degree of contamination
  - D. All the Above
9. If there is a need for the Safe Refuge Area Manager to enter the Contamination Reduction Zone in order to fulfill his responsibilities what level of PPE shall be worn:
- A. The level determined by the Hazardous Materials Group Supervisor.
  - B. Level A
  - C. Level B
  - D. Level C
10. Which ICS form must be maintained by the Safe Refuge Area Manager?
- A. ICS Form 211
  - B. ICS Form 214
  - C. ICS Form 202
  - D. ICS Form 299

Incident Command System Hazardous Materials Module  
**IM-222-6 Keyed Quiz**

Name: \_\_\_\_\_

Date: \_\_\_\_\_

---



# INCIDENT COMMAND SYSTEM

Hazardous Materials

LESSON ICS-361-7  
Hazardous Materials  
Safe Refuge Area  
Manager

---

## Hazardous Materials Refuge Area Manager

Instructions: This is a multiple choice quiz. For each of the following questions or statements, mark the letter preceding the one best answer.

Example: Methods and operating procedures which reduce fire, water and smoke damageduring and after fire are called:

- E. Overhaul
- F. Ventilation
- G. Extinguishment
- H. Salvage**

1. The Safe Refuge Area Manger reports to the:
    - A. The Site Access Control Leader**
    - B. Operations Section Chief
    - C. Planning Section Chief
    - D. Hazardous Materials Group Supervisor
  
  2. The Safe Refuge Area Manager is assigned to the:
    - A. Site Access Control Leader**
    - B. The Decon Leader
    - C. Hazardous Material Group Supervisor
    - D. The Incident Commander
  
  3. Where is the Safe Refuge Area located:
    - A. The Exclusion Zone
    - B. The Support Zone
    - C. The Contamination Reduction Zone**
    - D. The Tepid Zone
  
  4. The general objectives of the Safe Refuge Area Manager position includes all the following except:
    - A. Documenting the decon teams "on air time"**
    - B. Preventing spread of contamination from victims
    - C. Prioritizing victims for treatment
    - D. Collecting information from victims
  
  5. The Safe Refuge Area Manager must coordinate activities with:
    - A. The Decon Leader
    - B. The Entry Leader
    - C. The Site Access Control Leader
    - D. All of the above**
  
  6. The Safe Refuge Area Manager will request additional resources through:
-



# INCIDENT COMMAND SYSTEM

Hazardous Materials

LESSON ICS-361-7  
Hazardous Materials  
Safe Refuge Area  
Manager

---

- A. The Site Access Control Leader**
  - B. The State Warning Control Center
  - C. The Logistics Section Chief
  - D. The Planning Section Chief
7. The Safe Refuge Area Manager should relay pertinent information received from victims through the Site Access Control Leader to the:
- A. Incident Commander
  - B. Planning Section Chief
  - C. Local Media for immediate broadcast
  - D. Hazardous Materials Group Supervisor**
8. By what criteria will the Safe Refuge Area Manager(s) triage victims:
- A. Age and gender
  - B. Training and education
  - C. Medical condition and degree of contamination**
  - D. All the Above
9. If there is a need for the Safe Refuge Area Manager to enter the Contamination Reduction Zone in order to fulfill his responsibilities what level of PPE shall be worn:
- A. The level determined by the Hazardous Materials Group Supervisor.**
  - B. Level A
  - C. Level B
  - D. Level C
10. Which ICS form must be maintained by the Safe Refuge Area Manager?
- A. ICS Form 211
  - B. ICS Form 214**
  - C. ICS Form 202
  - D. ICS Form 299