

# POSITION OVERVIEW

- Covered in this Section:
  - Position Description
  - Position Requirements

# Description

- The EMTF/EMPF provides medical aid for injured or ill incident personnel
  - EMTF/EMPF's may be asked to monitor trends in camp medical conditions including behavioral concerns
  - Beyond the emergent situations the EMTF/EMPF may serve to monitor and detect when minor illnesses or injuries require referral to definitive care

# Description

- Uniqueness and challenges associated with remote sites tend to expand the EMTF/EMPF's role to provide care
  - Assisting with first-aid, self care and health management
  - Triaging conditions to determine appropriate self-care vs need for transport
  - Consider alternate modes of transport

# Description

- Fireline activities do not alleviate the requirements set by CA EMSA and your LEMSA
  - Know your protocols
  - It is your responsibility to make sure you inform your MEDL of your protocols

# Description

- Occasionally the EMTF/EMPF may be required to treat civilian representatives assisting with the incident, whether on the line or in base.
- Regardless of who's being treated the EMTF/EMPF is expected to function within their own Scope of Practice.
  - Own LEMSA Policy and Protocol
  - Home documentation requirements

# Local Emergency Medical Services Agency (LEMSA)

CA currently is divided into 32 separate and distinct LEMSA's

Working with CA Emergency Medical Services Authority (EMSA), each LEMSA determines the pre-hospital medical needs of a geographical area

Understanding your LEMSA's EMTF/EMPF policies is imperative prior to receiving the call out

# LEMSA Cont.

Review your local protocols including medical supplies and equipment requirements specific to the EMTF/EMPF

If your LEMSA hasn't developed protocols, work with them following the FIRESCOPE ICS-223 document as the minimum standard

# LEMSA Cont.

Know the documentation requirements including time standards

Your LEMSA is your partner to prevent errors in patient management



# Reciprocity

Nearly every state in the nation has reciprocity guidelines – before traveling outside CA, learn the process

The MEDL is responsible to determine the guidelines and coordinate between the EMTF/EMPF and that state

# Reciprocity Cont.

States are currently working on developing a national level to enact the:

“Uniform Emergency Volunteer Health Practitioners Act”

If enacted, the stated will accept paramedics without going through a lengthy reciprocity process but would be limited to the duration of the incident  
– CA currently does not have such laws

# Reciprocity Cont.

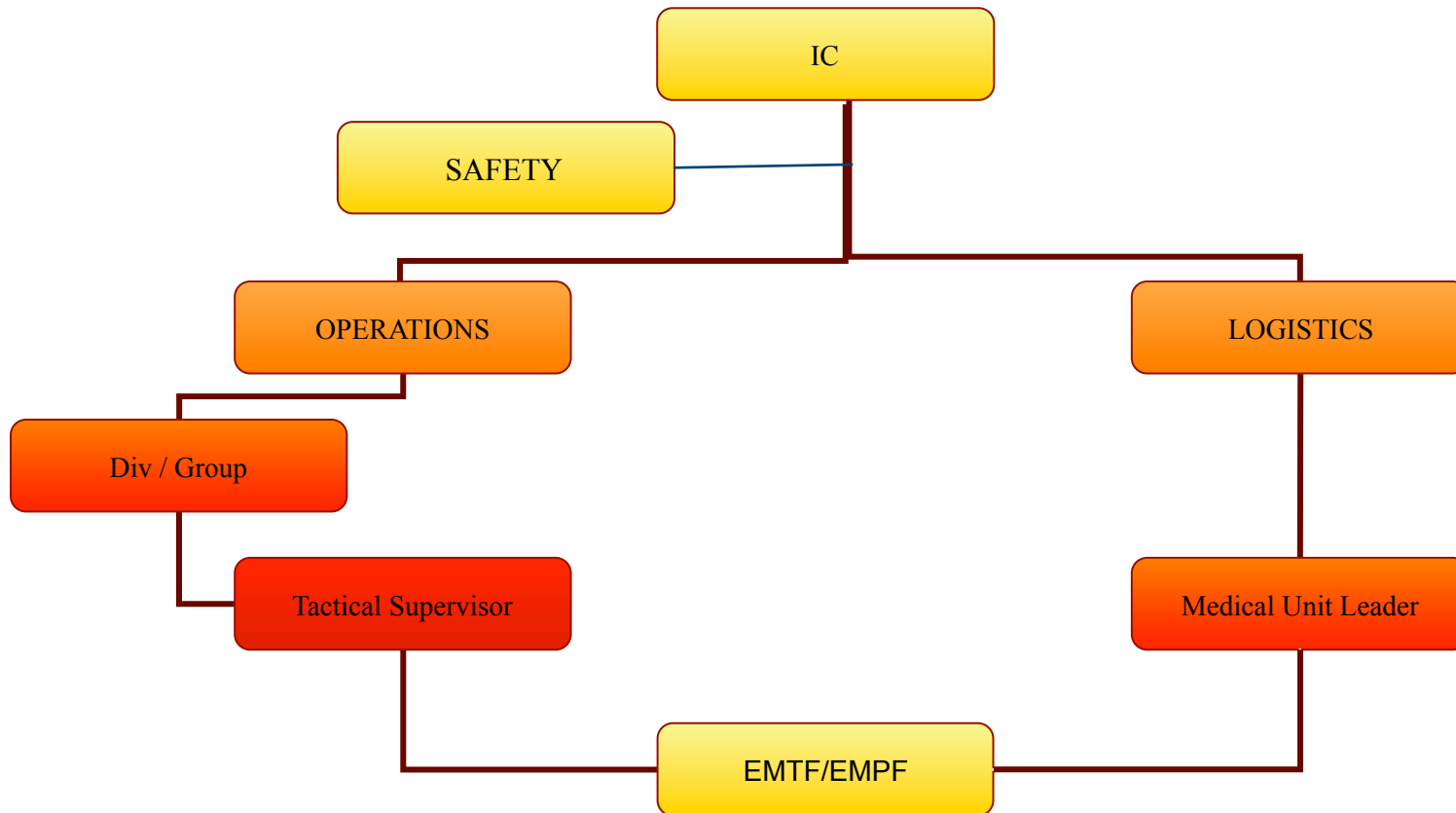
Assume that you do not have reciprocity with another state until it can be verified

It is your personal responsibility to protect your license

# Description

- The EMTF/EMPF formally works under the Logistics Section of the incident working directly for the MEDL
- While on the line, the EMTF/EMPF reports to the STL, DIVS and/or Branch Director responsible for the geographical location.

# Fireline Medic Supervisor Flow Chart



Representation of the EMTF/EMPF Working in the Operational Area

# Description

- The EMTF/EMPF should be paired with another EMTF/EMPF while working in the operational area due to safety considerations
- The EMTF/EMPF may however be assigned as a single resource

# Description

- All levels of EMT's may be ordered to fulfill the role of an EMTF and are permitted to function within their Scope of Practice regardless of jurisdictional or political boundaries
  - Referenced in NWCG Medical Unit Operating Standards

# Position Requirements

- Understand the relationship of the EMTF/EMPF to the overall ICS organization
- Be able to complete the required documentation for the EMTF/EMPF position
- Be able to utilize proper communication procedures while functioning as a EMTF/EMPF
- Be able to identify and assemble the minimum equipment required for the position of EMTF/EMPF



# Requirements Cont.

- Be able to perform the basic EMT procedures for common injuries
- Demonstrate the ability to perform basic map reading skills using a topographic map
- Be able to utilize the information found in the Incident Action Plan (IAP)

# Requirements Cont.

- During fireline assignments the EMTF/EMPF may work with a variety of incident personnel and should develop close working relationships with supervisors:
  - DIVS
  - STL/TFL
  - SOFR

# Requirements Cont.

- The EMTF/EMPF will be required to maintain forms specific to the incident command team, department requirements and local protocol.
- In addition, the EMTF/EMPF will need to become familiar with specific ICS forms

# Requirements Cont.

## Minimum Equipment and Supplies

- FIRESCOPE ICS 223 Appendix A
- FIRESCOPE ICS 223 Appendix B
- FIRESCOPE ICS 223 Appendix C
- Home Protocol

# Requirements Cont.

- Obtain initial briefing from Logistics Section Chief or Medical Unit Leader
  - Incident history & current status
  - Review Medical plan and receive priorities
  - Review Communications plan
  - Overview of the assignment and potential hazards
  - Anticipate incident medical needs
  - Review local medical protocols to include documentation procedures

# Requirements Cont.

Receive updates & prepare for assignment

- Number and types of personnel in assigned area
- Fire behavior, weather conditions, terrain, other natural hazards and safety concerns

# Requirements Cont.

- Anticipate needs and obtain medical supplies from the incident
- Secure copies of local emergency medical service forms / paperwork as necessary
  - If not available, use jurisdictional agency EMS forms
- If you didn't bring a portable radio – Secure / check out a radio with all incident frequencies
- Have radio cloned as needed
- Prior to each shift obtain a copy of the IAP and review the medical plan (ICS Form 206)

# Requirements Cont.

- Identify and contact your assigned tactical supervisor and confirm your travel route, transportation and ETA prior to leaving your check-in location
- Meet with your assigned tactical supervisor and obtain a briefing
- Obtain a briefing from the EMTF/EMPF you are relieving, if applicable



# Requirements Cont.

- Upon arrival at your assigned location , perform a radio check with your assigned tactical supervisor, Incident Communications Unit and the Medical Unit
- Maintain ongoing contact and interaction with personnel on your assignment to assess medical needs and provide assistance when needed

# Requirements Cont.

- Be prepared to make requests for transportation of ill and injured personnel, through channels, as outlined in the Medical Plan
- Make notifications of incident related illnesses and injuries as outlined in the Medical Plan

# Requirements Cont.

- At the conclusion of each shift advise your tactical supervisor that you are departing and will report to the Medical Unit Leader for de-briefing and submission of patient care documentation
- Maintain All Forms
- Demobilize