

# INCIDENT COMMAND SYSTEM

## Position Manual

### RAPID ASCENT TEAM LEADER- HIGH RISE INCIDENT

ICS-1005

July 14, 2017

This document contains information relative to the Incident Command System (ICS), developed by FIREScope and adopted as the framework of the National Incident Management System (NIMS). ICS products are designed to be compatible with and compliant with NIMS, as directed by the National Response Plan and adopted by the FIREScope Board of Directors.

Additional information and documentation can be obtained from the following source:

FIREScope  
Document Control  
2524 Mulberry Street  
Riverside, CA 92501-2200  
(951) 782-4174  
Fax (951) 782-4239  
[www.firescope.org](http://www.firescope.org)

The information contained in this document has been approved by the Fire and Rescue Service Advisory Committee/FIREScope Board of Directors for application in the statewide California Fire and Rescue Mutual Aid System.

This material is a development of the FIREScope Program.

CONTENTS

1.1 CHECKLIST USE ..... 4

1.2 CHECKLIST ..... 4

2.1 ORGANIZATION ..... 5

2.2 PERSONNEL ..... 5

2.3 MAJOR RESPONSIBILITIES AND PROCEDURES ..... 5

## **CHAPTER 1 CHECKLIST**

### **1.1 CHECKLIST USE**

The checklist presented below should be considered as a minimum requirement for the position.

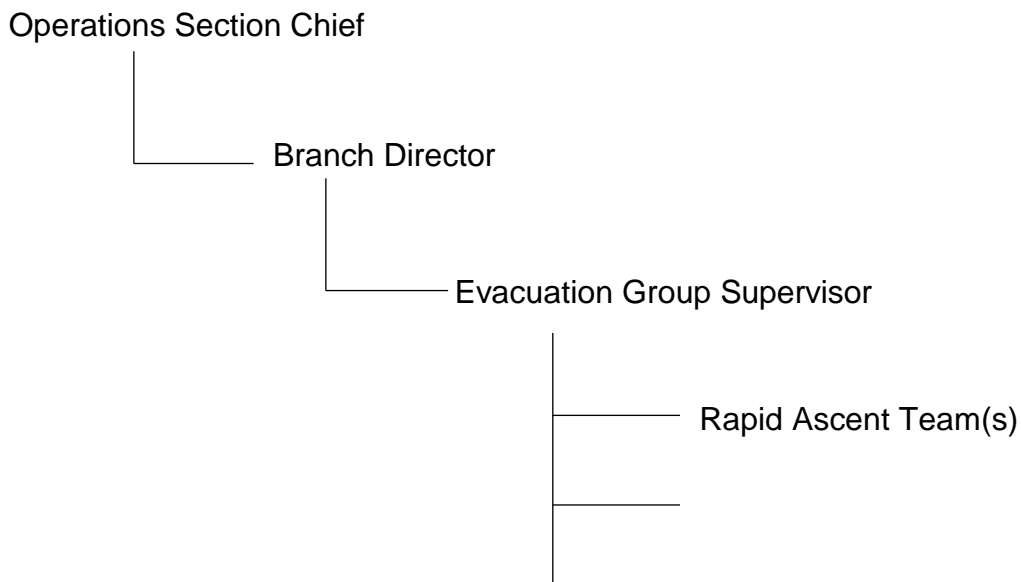
### **1.2 RAPID ASCENT TEAM LEADER CHECKLIST**

- a. Obtain briefing from the Evacuation Group Supervisor, Search Group Supervisor, Branch Director, Operations Section Chief, or Incident Commander (Reference ICS 420-1 FOG - Chapter 1 Common Responsibilities).
- b. Determine Rapid Ascent Team needs (personnel, equipment, communications, and supplies).
- c. Evaluate evacuation in progress.
- d. Confirm operational stairwell(s) with Operations Section Chief.
- e. Confirm evacuation stairwell(s) with Operations Section Chief.
- f. Search for and clear stairwell(s) of occupants and casualties.
- g. Assess or identify refuge area(s).
- h. Direct occupants out of stairwell(s) and relocate to refuge area(s).
- i. Ensure ventilation/pressurization of stairwell(s) and refuge area(s).
- j. Monitor stairwells until released by immediate supervisor.
- k. Secure operations and release personnel as determined by the Demobilization Plan.
- l. Maintain Unit/Activity Log (ICS Form 214).

**CHAPTER 2 ORGANIZATION, PERSONNEL AND PROCEDURES**

**2.1 ORGANIZATION**

- a. The High Rise Rapid Ascent Team Leader is responsible for directing and relocating the building occupants and casualties through the evacuation stairwell(s) to refuge area(s).
- b. The High Rise Rapid Ascent Team is not responsible for the rescue or recovery of occupants and casualties from the emergency.
- c. The High Rise Rapid Ascent Team Leader reports to the Evacuation Group Supervisor, Search Group Supervisor, Branch Director, Operations Section Chief, or Incident Commander.



**2.2 PERSONNEL**

The number of personnel assigned to the Rapid Ascent Team will be dependent on the incident size and complexity, number of stairwells, and anticipated number of occupants.

**2.3 MAJOR RESPONSIBILITIES AND PROCEDURES**

- a. Obtain briefing from the Evacuation Group Supervisor, Search Group Supervisor, Branch Director, Operations Section Chief, or Incident Commander.
  - 1. The briefing shall provide information and/or direction on the following:

- A. Number of stairwells and estimated number of occupants.
  - B. Current locations and assignments for the Rapid Ascent Team.
  - C. Incident organization and resources assigned.
  - D. Incident Communication Plan.
- b. Determine needs (personnel, equipment, communications, and supplies).
- 1. Assume control of existing personnel and resources assigned to the Rapid Ascent Team.
  - 2. Request additional personnel, equipment, and supplies from the Evacuation Group Supervisor, Search Group Supervisor, Branch Director, Operations Section Chief, or the Incident Commander as needed.
  - 3. Consider assigning a minimum of one Rapid Ascent Team per stairwell.
- c. Evaluate evacuation in progress.
- 1. Evaluate evacuation route(s) within the building and to the Refuge Area(s) for:
    - A. Safety.
    - B. Integrity.
    - C. Effectiveness.
  - 2. Obtain additional information from:
    - A. Division/Group Supervisor(s).
    - B. Ground Support Unit Leader.
    - C. Lobby Control Unit Leader
- d. Confirm operational stairwell(s) with Operations Section Chief or Incident Commander (and the Evacuation/Rescue Group Supervisor and Lobby Control Unit Leader, if established)
- 1. The operational stairwell(s) should be:
    - A. Separate from the evacuation stairwell.

- B. Clearly identified.
- C. Communicated to incident personnel and occupants.
- D. Identified in the Incident Action Plan.
- e. Confirm evacuation stairwell(s) with Operations Section Chief or Incident Commander (and the Evacuation/Rescue Group Supervisor and Lobby Control Unit Leader, if established)
  - 1. The evacuation stairwell(s) should be:
    - A. Separate from Emergency Operations.
    - B. Utilized for the movement and/or evacuation of occupants and casualties.
    - C. Controlled, secured, and monitored.
  - f. Search for and clear stairwell(s) of occupants and casualties.
    - 1. Clear operational stairwell(s) of occupants and casualties.
    - 2. Direct evacuees to evacuation stairwell(s) or refuge area(s).
    - 3. Notify immediate supervisor of the location of casualties.
  - g. Assess or identify refuge area(s).
    - 1. Notify the Evacuation Group Supervisor, Branch Director, Operations Section Chief, or Incident Commander of the refuge area(s).
  - h. Direct occupants out of stairwell(s) and relocate to refuge area(s).
  - i. Ensure ventilation/pressurization of stairwell(s) and refuge area(s).
    - 1. Coordinate with Systems Control Unit Leader for the use of the built-in systems.

Note: If Systems Control Unit has not been established coordinate with Lobby Control Unit Leader.

- 2. Coordinate with Ventilation Group Supervisor or Operations Section Chief.

- j. Monitor stairwells until released by immediate supervisor.
- k. Secure operations and release personnel as determined by the Demobilization Plan.
- l. Maintain Unit/Activity Log (ICS Form 214).